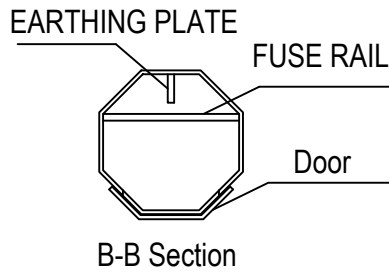


BASE PLATE
12 mm x 300x 300




AKSİ BELİRTİLMEDİKCE TÜM ÖLÇÜLER mm'DİR / ALL DIMENSIONS ARE IN mm

St 37 - S235JR - EN 10025 St 52 - S355JR Yük. Day. Çelik
 AISI 304 Pas. çelik / Stainless Steel AISI 316 Pas. çelik / Stainless Steel

Yüzey Kaplama / Surface Coating
 Sıcak Dal. Galv. / Hot Dip Galv. EN ISO 1461 E. statik Fırın Boya/Powder Coat
 Elektro Galvaniz / Electrogalvanizing Astar + Epoksi Boya / Epoxy Paint

Galvaniz / Hotdip Galvanize Standart EN ISO 1461-TS914
 Standart Çelik / Standart Steel EN 10025
 Civata Somun / Bolts Standard: ISO 898.1/5.8

 www.fabrikaenerji.com	PROJE ADI / PROJECT NAME		
	AD 100 /00		
	CİZEN/DRAWN BY E.AYGÜN	KONTROL/CONTROL E.AYGÜN	ONAY/APPROVE Ö.YILMAZ
	PAFTA NO/SIRA NO 10 / 06 / 2015	REVİSYON/REVISION 00	ÖLÇEK/SCALE NTS